

## ADVANTAGES

### Narrow, Low Profile Design

The design of the Key Dollar Cab is among the lowest profile on the market. With our adjustable mounting hardware, your comfort level becomes the limiting factor regarding how low the cab height is.

### Removable

Once installed, our cabs can be easily removed when it comes time to use your spray tractor for harvest.

### Protection

With standard floor to cab skirts and optional top air unit, the cab becomes a filtered, positive pressure environment that supplements your required personal protective equipment (PPE).

### Built to Last

Our cabs are built to withstand years of abuse. Everthing from the stainless steel door hinge to the Hehr Windows were selected to ensure your investment will be around for years to come.



*Kubota M8200N shown with Magnum Cab and Top Air upgrade*

## CAB MODELS



*John Deere 5310N shown with Omega Cab and Top Air upgrade*

We have two spray cab models to choose from: our signature cab - the *Magnum* and our original narrow cab - the *Omega*.

### The *Magnum*

Our signature cab, the *Magnum*, was introduced in 2003. This cab was originally designed for newer tractors that have side-mounted controls but will fit nearly any tractor (up to 100 hp) and provides the most interior space available while maintaining the benefits of the low-profile design that our cabs are known for. Outside dimensions are 44" wide x 52" long.

### The *Omega*

Our original narrow cab, the *Omega*, has been around for over 13 years and is the answer for those whose demands include minimal width in addition to low profile. The *Omega* cab is 10" narrower than our *Magnum* cab and will have the absolute minimal impact on a closely spaced orchard, grove or vineyard. Outside dimensions are 35" wide x 51" long.

## UPGRADES

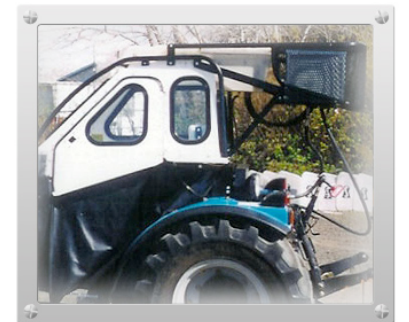
### Top Air Upgrade

Our 3-Speed Top Air Unit can be added to either of our cabs as a way of pressurizing the cab with fresh, filtered air. Outside air is brought in from in front of the cab where it is fed through a washable dust filter, followed by a 13"x16"x2" charcoal filter before finally being fed into the cab above the operator's head. The 3-Speed, 700 CFM fan allows the amount of air flow entering the cab to be regulated and the adjustable vents insure the air is always going exactly where you want.

### Air Conditioning Upgrade

For those operating in warmer climates, our hydraulic a/c upgrade is the ultimate in operator comfort. The unit works in conjunction with the Top Air Upgrade so that the air being fed into the cab is not only filtered but also cooled.

The A/C unit is powered by the tractor's hydraulic system and will fit on either of our cabs - as long as the Top Air Upgrade is in place. As with all of our products, the unit can move with the cab from tractor to tractor.



*Landini REX 80V shown with Omega Cab and both Top Air and Hydraulic Air Conditioning upgrades*